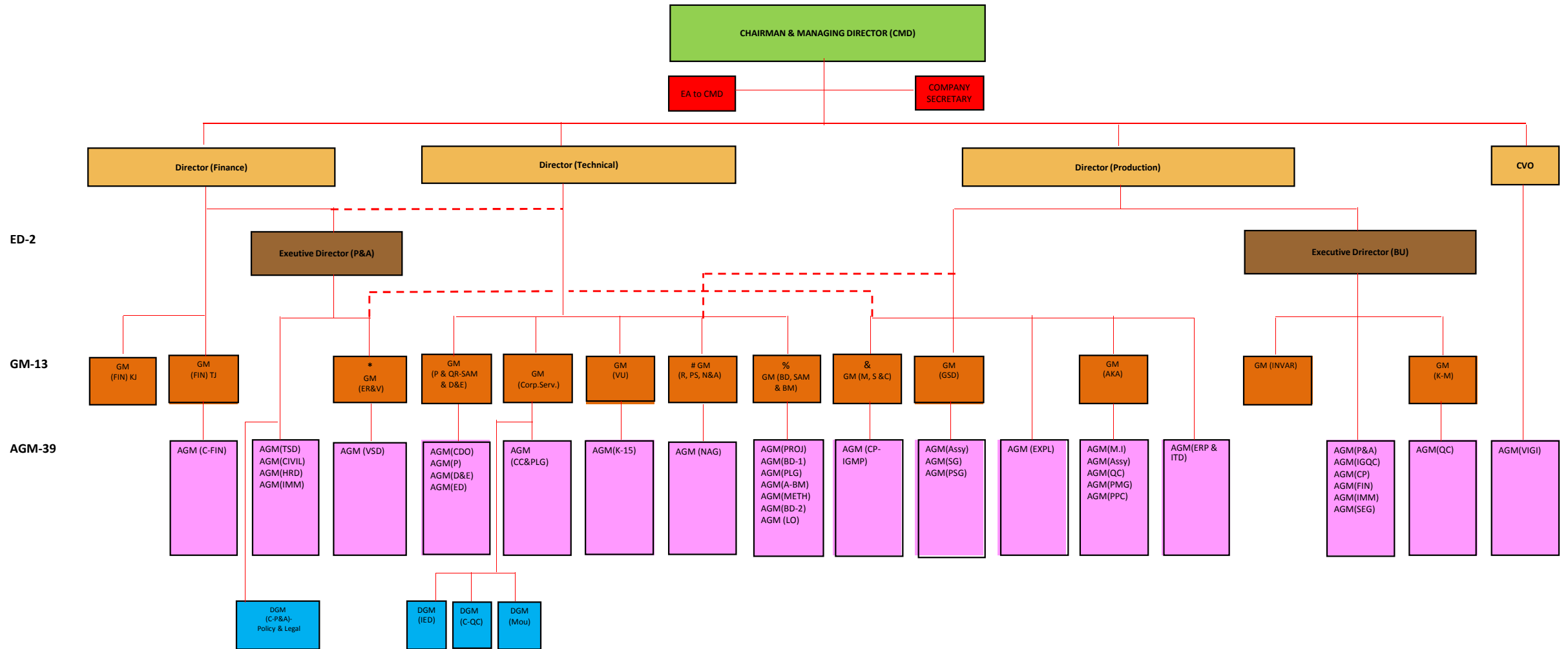


ORGANISATION STRUCTURE AS ON OCT'2016



- @ ED(P&A) reporting to D(F) for P&A matters and to D(T) for IMM / Civil / TS matters
- * GM(ER&V) reporting to ED(P&A) for ER matters and to D(T) for VSHORAD matters
- & GM(M, S & C) reporting to D(T) for spike matters and to D(P) for Milan & CP-IGMP matters
- # GM(R, PS, N&A) reporting to D(P) for ASTRA matters and to D(T) for 0ther matters